



Wrisco Industries Inc.

Prefinished Aluminum Color Chart

NOTE: Colors shown are representative of Wrisco's prefinished aluminum colors, but not necessarily exact matches. Colors and availability subject to change without notice.



White



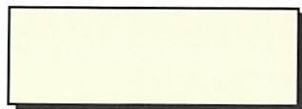
Matte White



Citgo White



Chevron White



Ivory



Exxon Sandstone



Mocha Tan



Conoco Khaki



Yellow



Shell Yellow



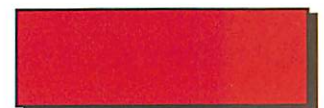
Caution Yellow



Exxon Red



Texaco Red



Red



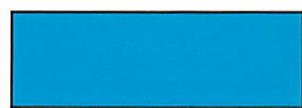
Construction Orange



Burgundy



Purple



Pepsi Blue



Chevron Blue



Sunoco Blue



Heron Blue



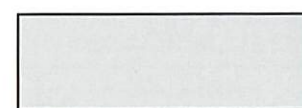
Extreme Green



BP Green



Ivy Green



Light Gray



Shell Gray



Medium Bronze



Bronze



Brown



Black Matte



Black Gloss



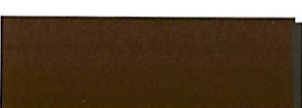
Bone White Fluoropon



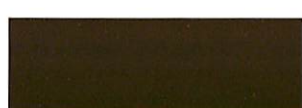
Bronze Fluoropon



Black Fluoropon



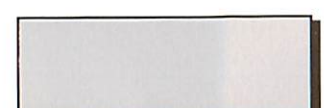
Dark Bronze Anodized



LA ExtraDark Bronze Anodized



Black Anodized



Clear Satin



Mill Finish



Bright Gold



Bright Brushed Gold



Gold Satin



Bright Clear



Bright Brushed Clear



Wrisco Industries Inc.

PREPAINTED ALUMINUM	Black Gloss .024/.032/.040 .050/.063 Black Matte .032/.040/.050/.063 Bronze .024/.032/.040/.050/.063 Bronze/Medium Bronze .032/.040 Brown .040 Burgundy .040 Caution Yellow .040 Chevron Blue .040	Citgo White .040 Construction Orange .040 Extreme Green .040 Heron Blue .040 Ivory .040 Ivy Green .040 Matte White .024/.032/.040/.050/.063 Mocha Tan .040	Pepsi Blue .040 Purple .040 Red .040/.050 Yellow .020/.024/.032/.040 White .020/.024/.032/.040 .050/.063/.080 Exxon Red .040
PREPAINTED GAS STATION CANOPY COLORS	BP Green .050/.063 BP Pearl .063 Chevron Blue .050/.063 Chevron White .050/.063 Citgo White .050/.063 Conoco Khaki .050/.063	Fina White .040/.050/.063 Light Gray .050/.063 Phillips 66 Bronze .040/.050/.063 Shamrock Red .050/.063 Shell Gray .040/.050/.063 Shell Yellow .040/.050/.063	Sunoco Blue .063 Texaco Black .040/.050/.063 Texaco Red .050/.063 Exxon Red .063/.050 Exxon Sandstone .063
ANODIZED	Black .040 Bright Brushed Clear .032/.040 Bright Clear .030/.040 Light Bronze .040	Bright Brushed Gold .032/.040 Bright Gold .030/.040 Clear Satin .032/.040/.050/.063	Dark Bronze .032/.040/.050/.063 Gold Satin .032/.040 LA Extra Dark Bronze .040
FLUROPON (70% KYNAR 500) Black, Bone White, Dark Bronze, Extra Dark Bronze.040/.050		MILL FINISH .024/.032/.040/.050 .063/.080/.090/.125	TREAD BRITE .063/.080/.100/.125

Alpolic® Aluminum Composite Material (ACM)

Wrisco now stocks Alpolic® Aluminum Composite Material (ACM) from Mitsubishi Chemical America, Inc. for use in interior and exterior architectural applications including canopies, building fascia, cladding, entryways, column covers, store fixtures, ATM kiosks and signage. Alpolic® panels feature such attributes as superior flatness, vibration dampening, durability and ease of maintenance. They are available in a variety of sizes/colors/finishes including corporate identity program colors; marble and granite stone series; decorative, textured and exotic metals.

Reflective sheets/blanks and channel letter coils and truck/trailer sheets now available.

Other Services: Masking, shearing, slitting, roll forming, hole punching, radius corners, custom fabrication and finishes.

**Look for Wrisco Industries Inc. on the Internet at: <http://www.wrisco.com>
 For more information email us at: sales.staff@wrisco.com**

ATLANTA
 1116 Fleetwood Drive
 Atlanta, GA 30316
 (404) 622-1066
 (800) 753-1066
 FAX (404) 622-6225

CHICAGO
 6075 West 115th Street
 Alsip, IL 60803
 (708) 385-7000
 (800) 627-8036
 FAX (708) 385-7002

DALLAS
 12102 Corporate Drive
 Dallas, TX 75228
 (972) 270-8848
 (800) 627-8848
 FAX (972) 613-7823

EDISON
 21 Executive Avenue
 Edison, NJ 08817
 (732) 287-8500
 (800) 753-9400
 FAX (732) 287-2120

CORPORATE
 355 Hiatt Drive, Suite B
 Palm Beach Gardens, FL
 33418-7199
 (800) 627-2646
 FAX (561) 627-3574